



## VC-TR40

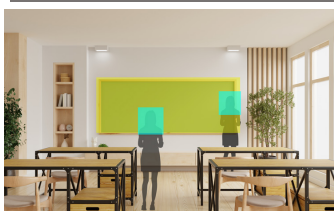
### AI Auto-Tracking Camera



Lumens® VC-TR40 is a dual-lens auto-tracking camera, featuring a 1080p 60fps image processor and a 20x optical zoom lens. Its secondary panoramic camera can analyze the whole view while the main camera is capturing an individual. The VC-TR40's AI-powered human face recognition and gesture control technology makes it easier than ever to track the subject. Advanced functionality includes auto-framing and partition-framing technology that intelligently zooms to capture all guests in view. The VC-TR40 can follow a subject smoothly and reliably, making it ideal for use in presentations, conferences, worship services, studios, and lecture halls.

## Key Features

- AI-Powered Human Face Recognition
- 3 Tracking modes and 2 Framing modes
- Mount upright or inverted
- HDMI, Ethernet, 3G-SDI and USB simultaneous output
- 1080p 60fps with 20x Optical Zoom



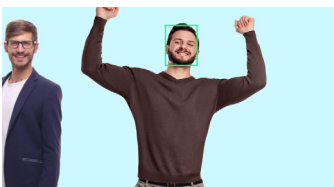
### Stage Tracking and Everywhere Tracking Mode

In Stage Tracking mode, the VC-TR40 will pan left and right to follow a presenter within a defined area. In the Everywhere Tracking mode, the camera will continuously track the presenter's movement left and right, forwards and backwards.



### Partition Tracking Mode

When the presenter moves inside a user-defined Partition Area, the camera switches to a preset angle and zoom. When outside a Partition Area, the camera autonomously follows the presenter.



### Gesture Control Tracking Method

The VC-TR40 features advanced gesture control. When the presenter raises their hands, the tracking target will switch automatically. You can also manually change the tracked subject by selecting the individual via the web interface.



### Auto-Framing and Partition Framing Mode

With the Auto-framing function, the VC-TR40 will dynamically adjust to capture all delegates, re-framing the view if participants join or leave during the session. In Partition-Framing mode, the camera will go to a preset position when the presenter walks in. When the presenter walks out the area, the camera will go back to the Auto-Framing mode.



### Flexible Mounting

The VC-TR40 can be positioned upright or suspended from the ceiling installation. When inverted, the camera can re-orient the image and flip the camera controls.



## Product Specifications

| PTZ Camera                  |   |
|-----------------------------|---|
| Sensor                      | 1/2.8" 2MP CMOS                             |
| Video Format                | 1080p : 60 / 50 / 30 / 25<br>720p : 60 / 50 |
| Video Output (HD) Interface | HDMI / Ethernet / 3G-SDI / USB 3.0          |
| Optical Zoom                | 20x   |
| Digital Zoom                | 12x   |
| Viewing Angle               | 58.7° (H) / 33° (V) / 67.3° (D)             |
| Aperture                    | F1.6~F2.8                                   |
| Focal Length                | 4.9mm ~ 94mm                                |
| Shutter Speed               | 1/25 ~ 1/10,000 sec                         |
| Minimum Object Distance     | 500mm                                       |
| Video S/N Ratio             | > 50dB                                      |
| Minimum Illumination        | 1 lux (F1.6, 50IRE, 30fps)                  |
| Focus System                | Auto / Manual                               |
| Gain Control                | Auto / Manual                               |
| White Balance               | Auto / Manual                               |
| Exposure Control            | Auto / Manual                               |
| WDR                         | Yes   |
| 3D NR                       | Yes   |
| Image Flip                  | Yes   |
| Auto Tracking               | Everywhere / Stage / Partition              |
| Auto Framing                | Everywhere / Partition                      |
| Gesture Control             | Yes   |
| Panoramic camera            |   |
| Sensor                      | 1/2.8" 2MP CMOS                             |
| Video Format                | 720p30                                      |
| Viewing Angle               | 111° (H) / 62° (V)                          |
| Aperture                    | F2.4  |
| Focal Length                | 3.1mm                                       |

| Pan & Tilt               |  |
|--------------------------|--|
| Panning Angle            | +170° ~ -170°  |
| Panning Speed            | 0.2° ~ 120°/sec  |
| Tilting Angle            | +90° ~ -30°  |
| Tilting Speed            | 0.2° ~ 80°/sec   |
| Preset Positions         | 256  |
| Output                   |  |
| HDMI / 3G-SDI            | 1080p60  |
| IP Stream                | PTZ Camera<br>Main : 1080p60<br>Second : 720p30<br>Panoramic Camera : 720p30 |
| IP Compression           | H.264  |
| USB Output               | 1080p30  |
| USB Compression          | MJPEG  |
| Network                  |  |
| IP Protocol              | HTTP / RTSP / RTMP / RTMPS / SRT   |
| PoE                      | Yes (IEEE802.3af)  |
| Audio                    |  |
| Audio Input              | Line In / MIC In   |
| Audio Output             | Ethernet / USB 3.0 / HDMI / SDI  |
| Audio Compression Format | USB : PCM  |
| Camera Control           |  |
| Interface                | RS-232 / Ethernet / USB 3.0  |
| Protocol                 | VISCA / ONVIF  |
| UVC                      | 1.1  |
| UAC                      | Yes  |
| General                  |  |
| DC In                    | 12V +/- 20%  |
| Power consumption        | PoE : 11W<br>DC In : 10W   |
| Body Color               | Black / White  |
| Weight                   | 3.3 lbs (1.5 kg)   |
| Dimension                | 7.5" x 7.3" x 5.4"<br>(190 x 185 x 138 mm)                                   |

## I/O Connections



# Lumens®

Lumens Integration, Inc.  
4116 Clipper Court  
Fremont, CA, 94538  
Phone: +1-866-600-0988  
Fax: +1-510-252-1389

Lumens Europe  
De Nayerstraat 17 9470  
Denderleeuw Belgium  
Phone: +32-473-58-38-95  
Fax: +32-2-452-76-00



www.MyLumens.com